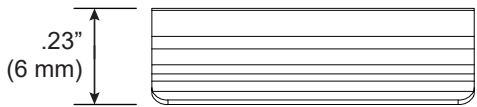
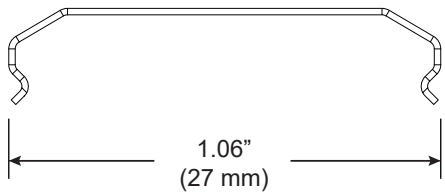
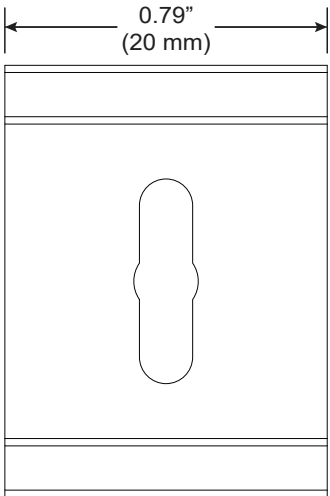
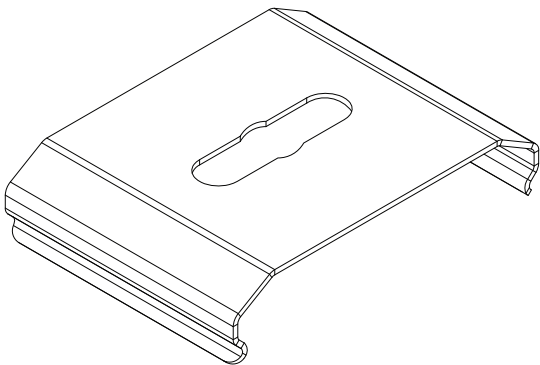
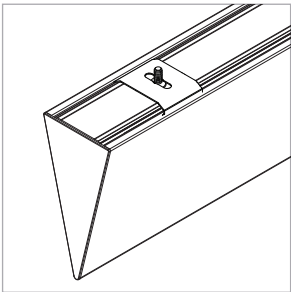
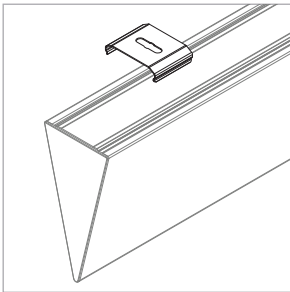


# Surface Clip

For use with Wedge® | 707

Mounts 707 | Wedge rail to most flat surfaces. Fixtures will be supplied with two clips for rails under 48", four clips for rails 48" and over, six clips for 96", eight clips for 108" - 120", and ten clips for 132" - 144" rails. . Position two clips 4" (102mm) from each end of the fixture and evenly space remaining clips.

Technical Support: 707-996-9898



PART NUMBER **CS-707-Z2**

DESCRIPTION Clip, System LED 707, ZipTwo & Wedge