

Vode Revit User Guide

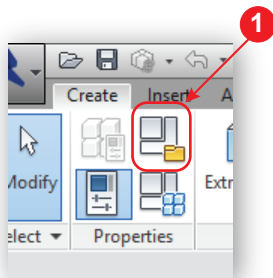
Adding Light to Vode Revit Files

Before you begin:

- 1: Download the Revit file for the desired fixture type and mounting from the Vode Website **Resources** tab.
- 2: Download the IES .pdf and .ies Light files for the fixture optics and output desired from the Vode Website **Resources** tab.
- 3: Open the Revit Family file. NOTE: Vode Revit files are compatible with Revit 2016 or newer.

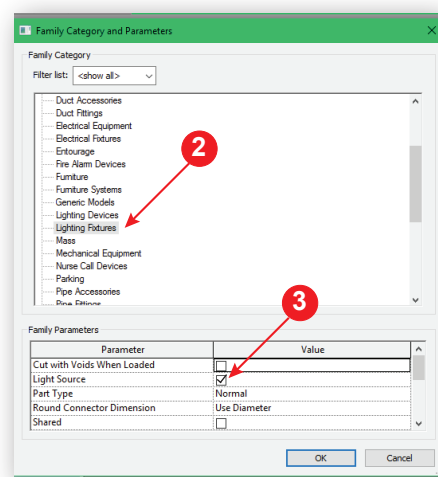
Step 1: Turn on Light Source

Click the **Family Category and Parameters** icon.



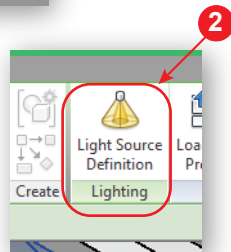
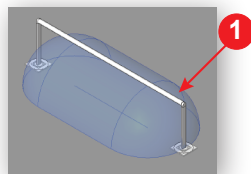
Locate the **Lighting Fixture** menu.

Check the **Light Source** box to turn on a generic light in the model. Click OK.

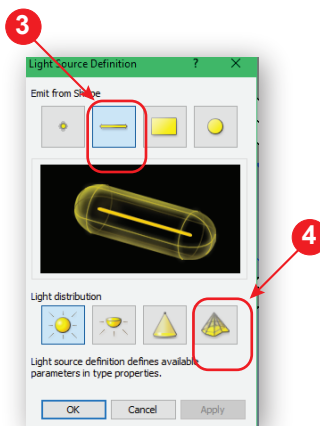


Step 2: Add IES File

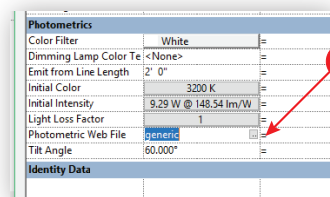
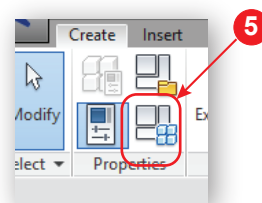
Select the light source (*it will turn from yellow to blue*) that was added to the file. This will allow you to select the **Light Source Definition** menu.



Change the light source shape to **Linear** and light distribution to **Photometric Web**.



Click the **Family Types** icon and add the desired IES file in the **Photometric Web File** line.



Step 3: Setting Up Light Photometrics

In **Family Types** menu, enter lighting photometrics data from the downloaded IES .pdf. Set the **Initial Color** and **Initial Intensity**.

Initial Intensity:
Enter the **Efficacy** and **Watts per Foot** from the IES pdf.
NOTE: Be sure to multiply the Watts by the length of the rail.

Photometrics		
Color Filter	White	=
Dimming Lamp Color Te	<None>	=
Emit from Line Length	2' 0"	=
Initial Color	3200 K	=
Initial Intensity	9.29 W @ 148.54 lm/W	=
Light Loss Factor	1	=
Photometric Web File	generic	=
Tilt Angle	60.000°	=
Identity Data		

Initial Color:

Select the desired color temperature:
2700K, 3000K, 3500K or 4000K

Using Vode Revit Files

Vode Revit files are parametric with mounting, rail and arm length options built-in. After inserting the **Vode Revit Family** file into the building model, select the light fixture. This will open the **Properties** menu.

Graphics:
Some models have mounting options under the graphics menu.
NOTE: Table anchor is only for Table Mounted 107 systems.

Dimensions:
All length options are located under the dimension menu. Consult the **Vode Spec Guide** for standard lengths. **NOTE:** Vode supplies custom lengths upon request.

107-BX-XX-WA_CA_TA-Tee	
Lighting Fixtures (1) Edit Type	
Elevation	4' 0"
Graphics	
Large Round Canopy	<input checked="" type="checkbox"/>
Large Square Canopy	<input type="checkbox"/>
Small Round Canopy	<input type="checkbox"/>
Small Square Canopy	<input type="checkbox"/>
Table Anchor (only for table mount)	<input type="checkbox"/>
Electrical - Lighting	
Calculate Coefficient of Utilization	<input type="checkbox"/>
Coefficient of Utilization	
Switch ID	
Electrical - Loads	
Panel	
Circuit Number	
Dimensions	
Arm Length	1' 0"
Fixture Length	4' 0"
Tee Length	1' 0"
Identity Data	
Image	
Comments	
Properties help Apply	